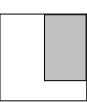
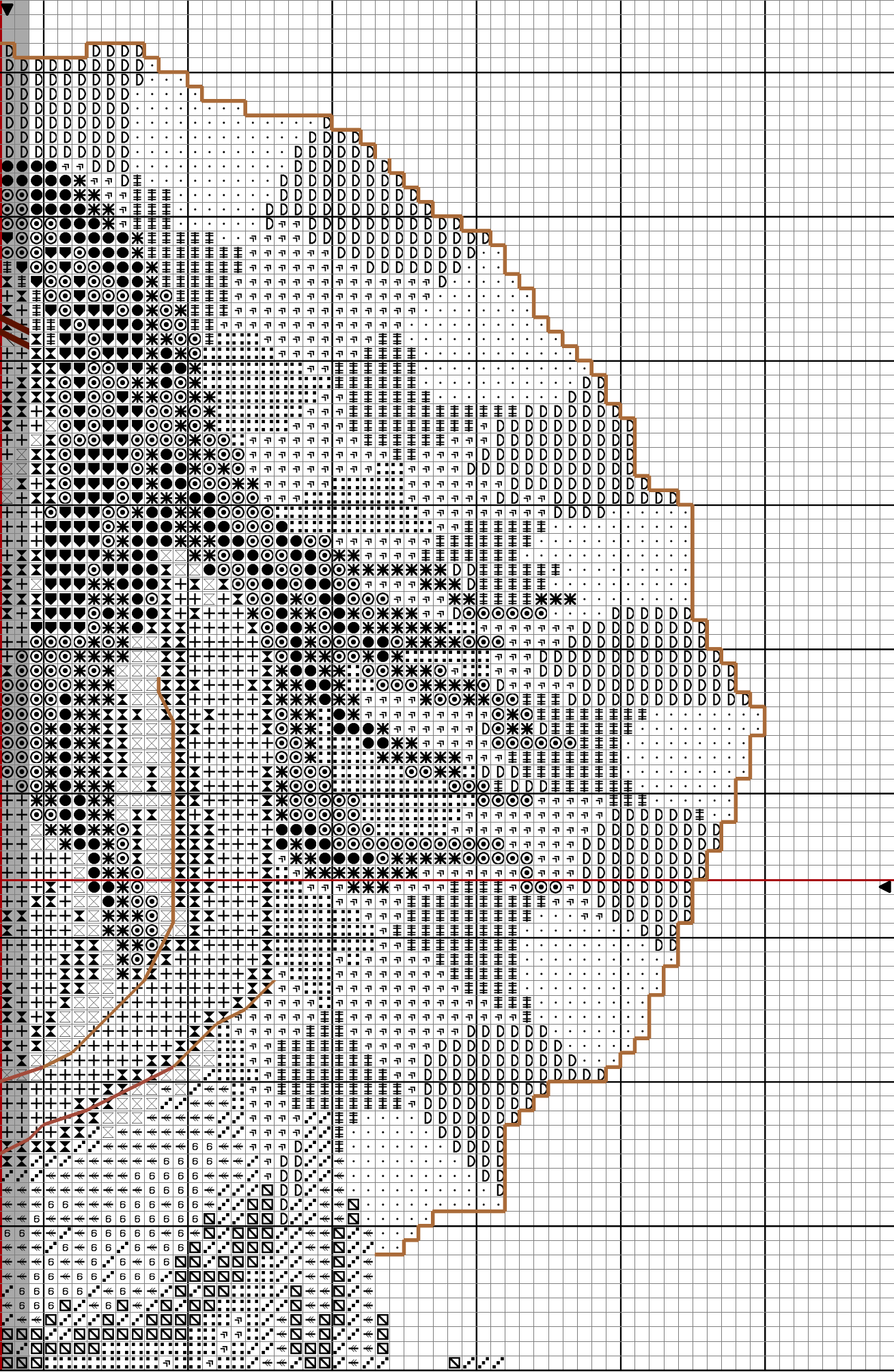
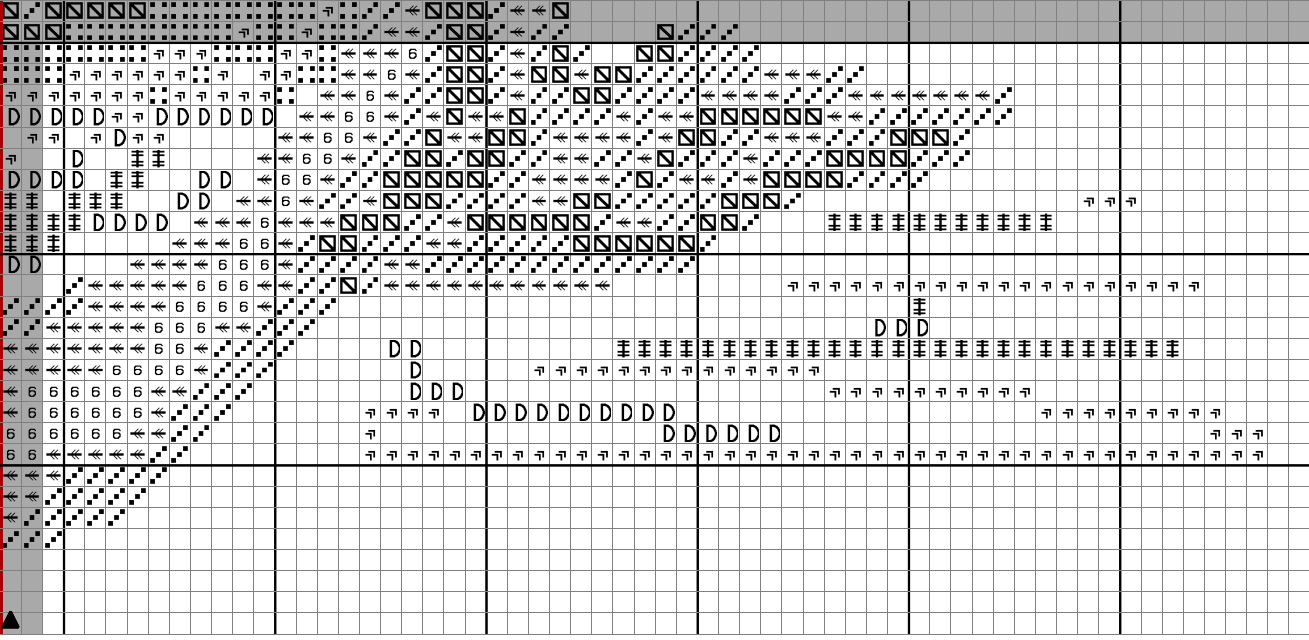


Copyright © Shan Harris Catkin Embroidery Design





Copyright © Shan Harris Catkin Embroidery Design

		DMC
●	Mahogany vy dk	300
◎	Mahogany med	301
Σ	Terracotta med	356
✱	Mahogany dk	400
◆	Mahogany dk + Mahogany vy dk	400 + 300
⋮	Tan med	436
⌞	Tan med lt	437
◻	Wedgewood med	518
◻	Wedgewood lt	519
·	Cream	712
D	Tan lt	738
≡	Tan vy lt	739
♡	Yellow lt	744
⊗	Peach Flesh lt	754
+	Peach Flesh vy lt	948
⊗	Peach Flesh vy lt + Peach Flesh lt	948 + 754
←	Wedgewood vy lt	3761
6	Wedgewood vy lt + White	3761 + BLANC

Backstitch in:

—	Mahogany vy dk	300
—	Mahogany med	301
—	Black	310
—	Terracotta med	356
—	Tan med	436
—	Yellow lt	744

Stitch Count 119 x 119

Design Area 8 1/2 x 8 1/2 inches at 14ct

Copyright © By: Shan Harris Catkin Embroidery Design